



Wow Starter: Traditional Tales - a variety of unusual adaptations of well known tales.

Final Event: Annual Panto - Cinderella

LITERACY

Reading - word reading KS1

- **e61** continue to apply phonic knowledge and skills as the route to decode words until automatic decoding has become embedded and reading is fluent
- **e62** read accurately by blending the sounds in words that contain the graphemes taught so far, especially recognising alternative sounds for graphemes
- **e63** read accurately words of two or more syllables that contain the same graphemes as above
- **e64** read words containing common suffixes
- **e65** read further common exception words, noting unusual correspondences between spelling and sound and where these occur in the word
- **e66** read most words quickly and accurately, without overt sounding and blending, when they have been frequently encountered

Reading - comprehension KS1

- **e69** develop pleasure in reading, motivation to read, vocabulary and understanding by:
- **e71** discussing the sequence of events in books and how items of information are related
- **e72** becoming increasingly familiar with and retelling a wider range of stories, fairy stories and traditional tales
- **e74** recognising simple recurring literary language in stories and poetry
- **e75** discussing and clarifying the meanings of words, linking new meanings to known vocabulary
- **e76** discussing their favourite words and phrases

Writing - transcription - Spelling KS1

- **e86** segmenting spoken words into phonemes and representing these by graphemes, spelling many correctly
- **e88** learning to spell common exception words
- **e89** learning to spell more words with contracted forms

Writing - handwriting KS1

- **e96** start using some of the diagonal and horizontal strokes needed to join letters and understand which letters, when adjacent to one another, are best left unjoined
- **e97** write capital letters and digits of the correct size, orientation and relationship to one another and to lower case letters

Writing - composition KS1

- **e104** consider what they are going to write before beginning by:
- **e107** encapsulating what they want to say, sentence by sentence
- **e108** make simple additions, revisions and corrections to their own writing by:
- **e110** re-reading to check that their writing makes sense and that verbs to indicate time are used correctly and consistently, including verbs in the continuous form

Writing - vocabulary, grammar and punctuation KS1

- **e113** develop their understanding of the concepts set out in English Appendix 2 by:
- **e114** learning how to use both familiar and new punctuation correctly (see English Appendix 2), including full stops, capital letters, exclamation marks, question marks, commas for lists and apostrophes for contracted forms and the possessive (singular)

UNDERSTANDING THE WORLD

Uses of everyday materials KS1

- **sc29** identify and compare the suitability of a variety of everyday materials, including wood, metal, plastic, glass, brick, rock, paper and cardboard for particular uses

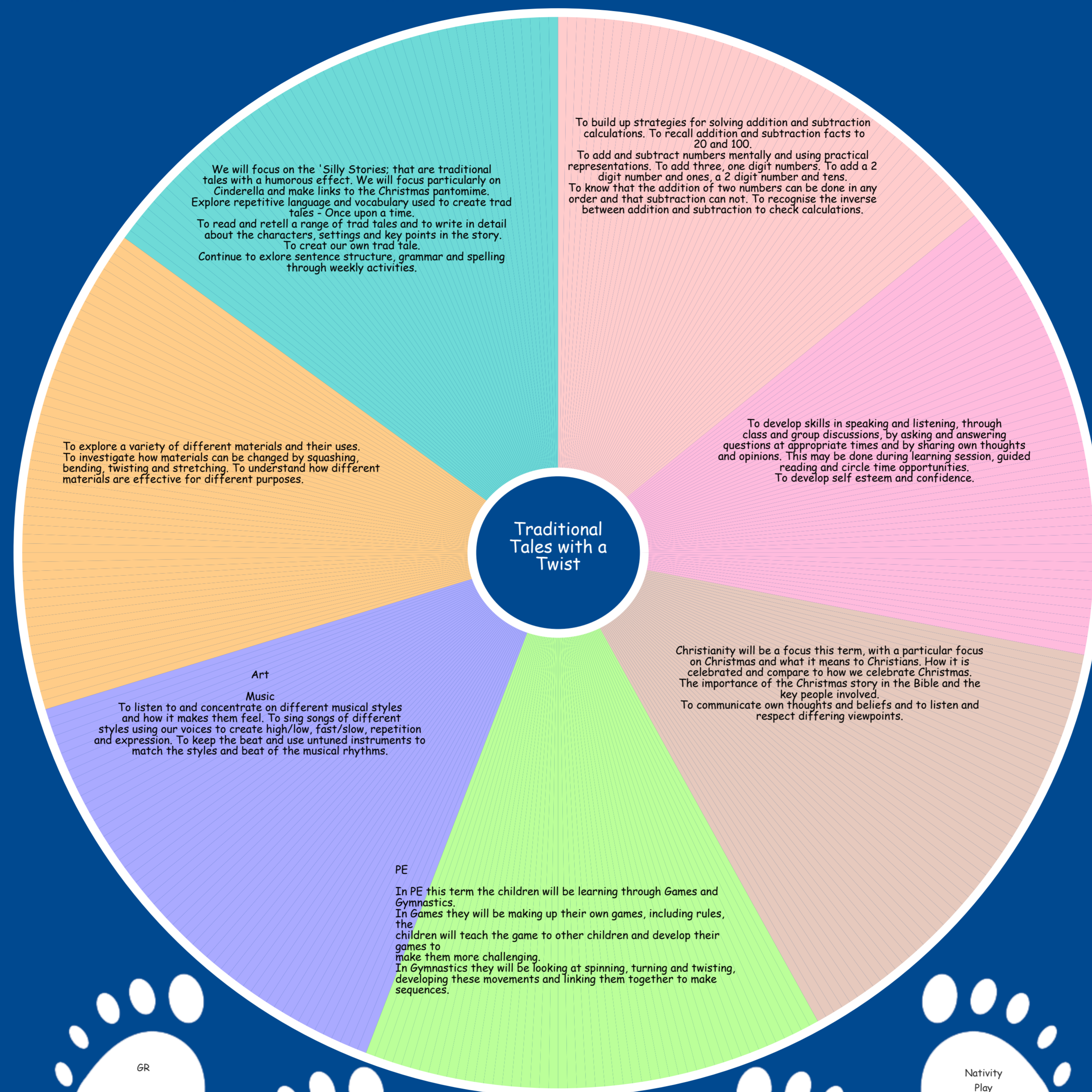
- **sc30** find out how the shapes of solid objects made from some materials can be changed by squashing, bending, twisting and stretching.

EXPRESSIVE ARTS AND DESIGN

KS1

- **mu1** I can sing songs using my voice to show the meaning of the words and tune
- **mu2** I can repeat chants and rhymes with expression
- **mu3** I can use my voice in different ways
- **mu4** I can play an untuned instrument in a piece of music

- **mu7** I can sit and listen attentively to recorded music
- **mu8** I can concentrate when listening to music and describe what I think and how the music makes me feel
- **mu10** I understand loud/quiet, fast/slow and high/low



MATHEMATICS AND COMPUTING

Number - addition and subtraction KS1

- **m38** solve problems with addition and subtraction:
- **m39** using concrete objects and pictorial representations, including those involving numbers, quantities and measures
- **m40** applying their increasing knowledge of mental and written methods
- **m41** recall and use addition and subtraction facts to 20 fluently, and derive and use related facts up to 100
- **m42** add and subtract numbers using concrete objects, pictorial representations, and mentally, including:

- **m43** a two-digit number and ones
- **m44** a two-digit number and tens
- **m45** two two-digit numbers
- **m46** adding three one-digit numbers
- **m47** show that addition of two numbers can be done in any order (commutative) and subtraction of one number from another cannot
- **m48** recognise and use the inverse relationship between addition and subtraction and use this to check calculations and solve missing number problems.

COMMUNICATION AND LANGUAGE

KS1

- **sl1** listen and respond appropriately to adults and their peers
- **sl2** ask relevant questions to extend their understanding and knowledge
- **sl3** use relevant strategies to build their vocabulary
- **sl4** articulate and justify answers, arguments and opinions

- **sl5** give well-structured descriptions, explanations and narratives for different purposes, including for expressing feelings
- **sl9** participate in discussions, presentations, performances, role play, improvisations and debates

PSED & RELIGIOUS EDUCATION

PSED Preparing to play an active role as citizens KS1

- **pa12** Listen and respond in group discussions.
- **pa13** Express own views with increasing confidence.
- **pa16** Recognise the difference between right and wrong.

- **ra13** Explore a range of religious stories and sacred writings and talk about their meanings.
- **ra14** Name and explore a range of celebrations, worship and rituals in religion, noting similarities where appropriate.
- **ra15** Identify the importance, for some people, of belonging to a religion and recognise the difference this makes to their lives.

PSED Developing good relationships and respecting the differences between people KS1

- **pr20** Recognise how their behaviour affects other people.
- **pr21** Identify and respect the differences and similarities between people.

- **ra16** Explore how religious ideas and beliefs can be expressed through the arts.
- **ra17** Communicate their responses to religious ideas and beliefs expressed through the arts.

Learning About Religion KS1

PHYSICAL EDUCATION

KS1

- **pe1** I can run safely, controlling my speed and direction
- **pe1.1** I can jump over obstacles safely and with control, and off apparatus knowing how to land safely
- **pe1.2** I can send and receive a ball or other equipment in different ways (hitting, kicking, throwing, striking)
- **pe1.3** I can control my movements in gymnastics and show how I can balance, roll, travel or climb safely
- **pe1.4** I can perform a sequence in gymnastics to demonstrate controlled, co-ordinated movements in direction, level and speed

- **pe1.5** I can co-operate with a partner or small group to develop my skills, showing awareness of others' needs
- **pe2** I can play simple team games showing awareness of my team-mates and opponents and understanding the importance of the rules
- **pe2.1** I can think of simple tactics to help attack or defend in a team game



Traditional Tales with a Twist - Stage Coverage

UNDERSTANDING THE WORLD

Uses of everyday materials **KS1**

- **sc29** identify and compare the suitability of a variety of everyday materials, including wood, metal, plastic, glass, brick, rock, paper and cardboard for particular uses
- **sc30** find out how the shapes of solid objects made from some materials can be changed by squashing, bending, twisting and stretching.

MATHEMATICS AND COMPUTING

Number - addition and subtraction **KS1**

- **m38** solve problems with addition and subtraction:
- **m39** using concrete objects and pictorial representations, including those involving numbers, quantities and measures
- **m40** applying their increasing knowledge of mental and written methods
- **m41** recall and use addition and subtraction facts to 20 fluently, and derive and use related facts up to 100
- **m42** add and subtract numbers using concrete objects, pictorial representations, and mentally, including:
 - **m43** a two-digit number and ones
 - **m44** a two-digit number and tens
 - **m45** two two-digit numbers
 - **m46** adding three one-digit numbers
- **m47** show that addition of two numbers can be done in any order (commutative) and subtraction of one number from another cannot
- **m48** recognise and use the inverse relationship between addition and subtraction and use this to check calculations and solve missing number problems.

PHYSICAL EDUCATION

KS1

- **pe1** master basic movements including running
- **pe1.1** master basic movements including jumping
- **pe1.2** master basic movements including throwing and catching
- **pe1.3** aster basic movements developing balance co-ordination
- **pe1.4** master basic movements, developing agility
- **pe1.5** master basic movements and begin to apply these in a range of activities
- **pe2** participate in team games
- **pe2.1** in team games, develop simple tactics for attacking and defending

EXPRESSIVE ARTS AND DESIGN

KS1

- **mu1** use their voices expressively by singing songs
- **mu2** use their voices expressively by speaking chants and rhymes
- **mu3** use their voices creatively
- **mu4** play untuned instruments musically
- **mu7** listen with concentration and understanding to a range of high-quality recorded music
- **mu8** listen with concentration and understanding to a range of music
- **mu10** experiment with the inter-related dimensions of music.

LITERACY

Reading - word reading **KS1**

- **e61** continue to apply phonic knowledge and skills as the route to decode words until automatic decoding has become embedded and reading is fluent
- **e62** read accurately by blending the sounds in words that contain the graphemes taught so far, especially recognising alternative sounds for graphemes
- **e63** read accurately words of two or more syllables that contain the same graphemes as above
- **e64** read words containing common suffixes
- **e65** read further common exception words, noting unusual correspondences between spelling and sound and where these occur in the word
- **e66** read most words quickly and accurately, without overt sounding and blending, when they have been frequently encountered

Reading - comprehension **KS1**

- **e69** develop pleasure in reading, motivation to read, vocabulary and understanding by:
- **e71** discussing the sequence of events in books and how items of information are related
- **e72** becoming increasingly familiar with and retelling a wider range of stories, fairy stories and traditional tales
- **e74** recognising simple recurring literary language in stories and poetry
- **e75** discussing and clarifying the meanings of words, linking new meanings to known vocabulary
- **e76** discussing their favourite words and phrases

Writing - transcription - Spelling **KS1**

- **e86** segmenting spoken words into phonemes and representing these by graphemes, spelling many correctly
- **e88** learning to spell common exception words
- **e89** learning to spell more words with contracted forms

Writing - handwriting **KS1**

- **e96** start using some of the diagonal and horizontal strokes needed to join letters and understand which letters, when adjacent to one another, are best left unjoined
- **e97** write capital letters and digits of the correct size, orientation and relationship to one another and to lower case letters

Writing - composition **KS1**

- **e104** consider what they are going to write before beginning by:
- **e107** encapsulating what they want to say, sentence by sentence
- **e108** make simple additions, revisions and corrections to their own writing by:
- **e110** re-reading to check that their writing makes sense and that verbs to indicate time are used correctly and consistently, including verbs in the continuous form

Writing - vocabulary, grammar and punctuation **KS1**

- **e113** develop their understanding of the concepts set out in English Appendix 2 by:
- **e114** learning how to use both familiar and new punctuation correctly (see English Appendix 2), including full stops, capital letters, exclamation marks, question marks, commas for lists and apostrophes for contracted forms and the possessive (singular)

COMMUNICATION AND LANGUAGE

KS1

- **s11** listen and respond appropriately to adults and their peers
- **s12** ask relevant questions to extend their understanding and knowledge
- **s13** use relevant strategies to build their vocabulary
- **s14** articulate and justify answers, arguments and opinions
- **s15** give well-structured descriptions, explanations and narratives for different purposes, including for expressing feelings
- **s19** participate in discussions, presentations, performances, role play, improvisations and debates

PSED & RELIGIOUS EDUCATION

PSED Preparing to play an active role as citizens **KS1**

- **pa12** Listen and respond in group discussions.
- **pa13** Express own views with increasing confidence.
- **pa16** Recognise the difference between right and wrong.

PSED Developing good relationships and respecting the differences between people **KS1**

- **pr20** Recognise how their behaviour affects other people.
- **pr21** Identify and respect the differences and similarities between people.

Learning About Religion **KS1**

- **ra13** Explore a range of religious stories and sacred writings and talk about their meanings.
- **ra14** Name and explore a range of celebrations, worship and rituals in religion, noting similarities where appropriate.
- **ra15** Identify the importance, for some people, of belonging to a religion and recognise the difference this makes to their lives.
- **ra16** Explore how religious ideas and beliefs can be expressed through the arts.
- **ra17** Communicate their responses to religious ideas and beliefs expressed through the arts.

